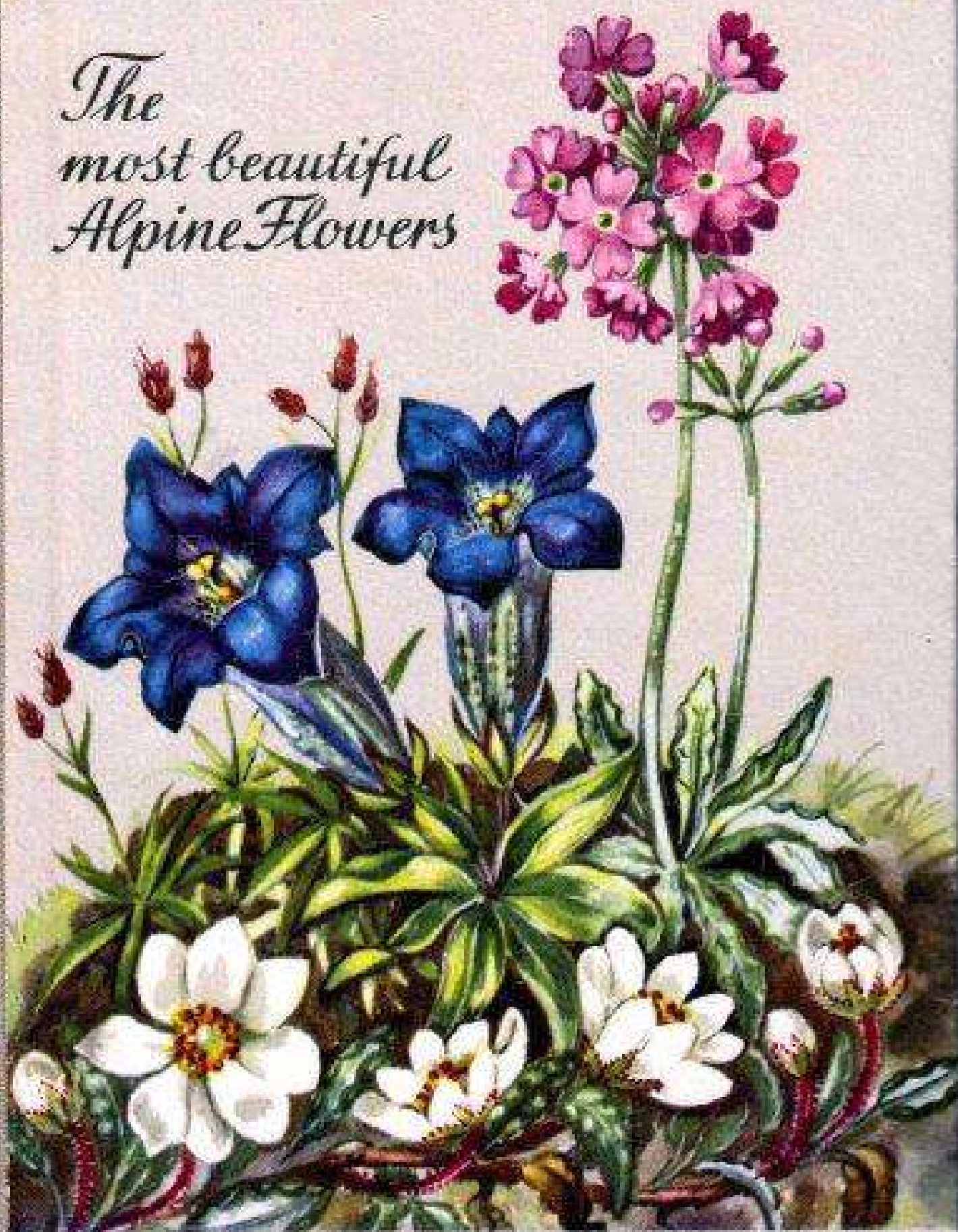


*The
most beautiful
Alpine Flowers*



W. 3. 95

3

The most beautiful

and most famous

of the world

is the most famous

of the world

of the world

of the world

of the world

of the world

of the world

The most beautiful Alpine Flowers

Water-Colours by
Mila Lippmann-Pawlowski

Translated from the German by
Oscar Konstandt

Copyright 1955 by

UMSCHAU-VERLAG
Frankfurt/Main

PINGUIN-VERLAG
St. Johann/Tyrol



Schneerose · Christmas Rose

1 Christmas Rose · Schneerose · *Helleborus niger*
Height : 3—12-in.

In early Spring, when the Alpine woods are still snow-covered, the white Christmas Rose makes its appearance. The undersides of the petals are tinged with pinky-violet, and in addition to the numerous yellow stamens, there are a number of tapering petal-nectaries, tubular in shape. Its favourite habitat are the humus chalk and dolomite soils, the open forests of pine, spruce and larch, and the scrub-covered slopes up to heights of 5,600 feet. It has shiny dark-green leaves, rough and leathery in texture, which survive the winter. It flowers from February to May, occasionally even as early as November or December ; hence its name : Christ(mas) Rose.

Poisonous. Protected in the Tyrol, but only partially in Germany and the Eastern provinces of Austria.



Berg-Küchenschelle • Mountain Anemone

2 Mountain Anemone · Berg-Küchenschelle · *Pulsatilla montana* · Height : 3—12-in.

At Eastertime, the dark-violet Mountain Anemone may be seen, especially in the southern Alpine valleys. Like several other Anemone-varieties, the outer sides of the buds are covered with thick hairs which protect them alike from the intense cold and heat. Its finely shaped leaves do not develop fully, until after the flower has formed. Like several other related types, it thrives well in chalky soil on dry southern slopes. It is found up to altitudes of 7,000 feet.

Very poisonous. Protected in Germany, and in the Swiss Canton of St. Gallen ; only partially in Austria.



3 Stemless Moss Campion · Stengelloses Leimkraut · *Silene acaulis*

In stony pastures, rock crevices, on rocky mountain slopes and moraines, we frequently meet with the Stemless Moss Campion. It spreads over the stones forming dense moss-like cushions covered with a profusion of tiny rose-pink flowers. This plant can often be found in calcareous soils, and its range is from about 5,000 to 11,000 feet. Flowering from May to August, it is, like all other "cushion-plants" in great need of protection.

Protected in Switzerland ; only partially in Germany, and some provinces of Austria.

4 Alpine Soldanella · Echtes Alpenglöckchen · *Soldanella alpina* · Height : 2—6-in.

The delicate Soldanella may be seen springing up in the track of the melting snow. It does well in basic and neutral soils, and open growing mountain forests. There are, as a rule, two or three tiny violet flowers on each stem. Ranging from about 1,600 to 10,000 feet, its Flowering Time lasts from May to August. →



Stengellooses Leimkraut Echtes Alpenglöckchen
Stemless Moss Campion Alpine Soldanella

Kleines Alpenglöckchen
Dwarf Soldanella

Alpen-Hahnenfuß
Alpine Crowfoot

5 Dwarf Soldanella · Kleines Alpenglöckchen · *Soldanella pusilla* · Height : 1—4-in.

The nodding flowers of this *Soldanella* are of somewhat brighter colour than those of its sister mentioned above, and are frequently borne singly upon its stems. For adequate growth the plant requires strong acid soil which has lain snow-covered for many months. It blooms from May to August at any height between 4,800 and 10,200 feet.

6 Alpine Crowfoot · Alpen-Hahnenfuß · *Ranunculus alpestris* · Height : 2—4-in.

The Alpine Crowfoot springs up in places where melted snow has saturated the ground for a long time, especially in basic soils above the tree-line. It ranges from about 4,800 to 9,000 feet but on some scree slopes, however, it descends as low as 1,600 feet. Blooming from May to September, its brilliant white flowers delight the eye of the beholder.



7 Lady's-Slipper · Frauenschuh · *Cypripedium calceolus* · Height : 6—20-in.

The Lady's-Slipper has become an extremely rare plant nowadays, and is therefore in great need of protection. It flourishes in open-growing deciduous and pine woods, and requires for adequate growth a light loam rich in chalk and humus. It is one of our most beautiful native orchids, which flowers from May to July. In some rare cases, it can even be found at heights of about 6,600 feet.

Protected in Germany, Austria and Switzerland.





Frauenschuh · Lady's-Slipper



Frühlings-Enzian
Spring-Gentian

Frühlings-Anemone
Spring-Anemone

← 8 **Spring-Gentian** · Frühlings-Enzian · *Gentiana verna*
Height : 1½—5-in.

In Spring, shortly after the melting of the snow, the Spring-Gentian may be seen in poor meadows and marshy grassland throwing up masses of intense blue star-like flowers. This charming Alpine plant blooms from March to August, and often a second time, in the late Autumn, extending to altitudes of about 9,800 feet.

Protected in some Swiss Cantons. Its sale is strictly prohibited in Germany and Austria.

9 **Spring-Anemone** · Frühlings-Anemone · *Pulsatilla vernalis* · Height : 2—6-in.

The flowers of the Spring-Anemone open only in sunlight. The petals, pinky-violet underneath, are covered with golden-yellow silky hairs. The buds are so completely clad in woolly fluff that the plant is locally known as "Haarmandli" (in the valley of the Upper Inn) and as "Ganselen" (in the Tauern). It thrives in dry meadows and slightly acid humus soils, especially above the forest-line. Flowering from March to June, it occurs up to heights of about 11,800 feet.

Poisonous. Protected in Germany, Austria and some Swiss Cantons.



10 **Erica** · Frühlingsheidekraut · *Erica carnea*

The red Erica can be found flowering in March (in mild winters even as early as from November to February) and on sunny southern slopes, at great heights, as late as June. It is a tiny dwarf-shrub with trailing stems that tend to turn upwards, and it covers scree and the broken ground on wooded hillsides. In the mountains, it prefers calcareous soils, and its range extends from the valleys up to heights of about 8,700 feet.

Protected in the Swiss Canton of Tessin.



Frühlingsheidekraut
Erica

Leberblümchen
Noble Liverwort

Tiroler Windröschen
Baldo-Anemone

← 11 **Noble Liverwort (Hepatica) · Leberblümchen ·**
Anemone hepatica · Height : 2—6-in.

Together with the Wood-Anemone, Daphne, Lungwort and Snowdrop, the Hepatica is one of our best known early flowering plants in the deciduous and pine woods. It occurs in three different colours : violet, red and white, and it flowers before the woods spring into leaf, so as to get sufficient light.

Protected in some Swiss Cantons. Its sale is strictly prohibited in Germany. Partially protected in several Austrian provinces.

12 **Baldo-Anemone (Tyrolean Anemone) · Tiroler Windröschen ·** *Anemone baldensis* · Height : 2—5-in.

This Tyrolean Anemone can be found growing in basic to slightly acid soils, but most frequently in the Dolomite-screes where it blooms from June to August. It ranges up to about 10,000 feet.

Poisonous.



13 **Cyclamen (European) · Alpenveilchen ·** *Cyclamen europaeum* · Height : 4—10-in.

The Cyclamen may be seen growing among bushes and in open woods such as beech where it prefers light humus soils. Its strong scent attracts notice even from a distance. Flowering from July to September, it ranges up to heights of approximately 6,600 feet.

Protected in Germany, Austria and Switzerland.

14 **Biflorate or two-flowered Violet · Gelbes Veilchen ·** *Viola biflora* · Height : 2½—5-in.

This yellow violet thrives in shady, moist humus soils and on lightly wooded slopes. It grows freely and can be found in the valleys as well as in the moun-



Alpenveilchen
Cyclamen (European)

Gelbes Veilchen
Two-flowered Violet

tains where it ranges up to 10,000 feet. Flowering Time : May to August.

Protected in some Swiss Cantons.



15 Dark Columbine · Dunkle Akelei · *Aquilegia atrata*
Height : 1,2—2,6 feet.

The dark Columbine flowers from May to July among tall grasses, and bushes and in open-growing woods. It is especially attractive because of its five long-spurred sepals which are longer than the pointed petals. The nodding flower bears a great number of long stamens. It is at home in various soils and its range extends from the valleys up to heights of about 7,000 feet.

Protected in Germany and Austria.



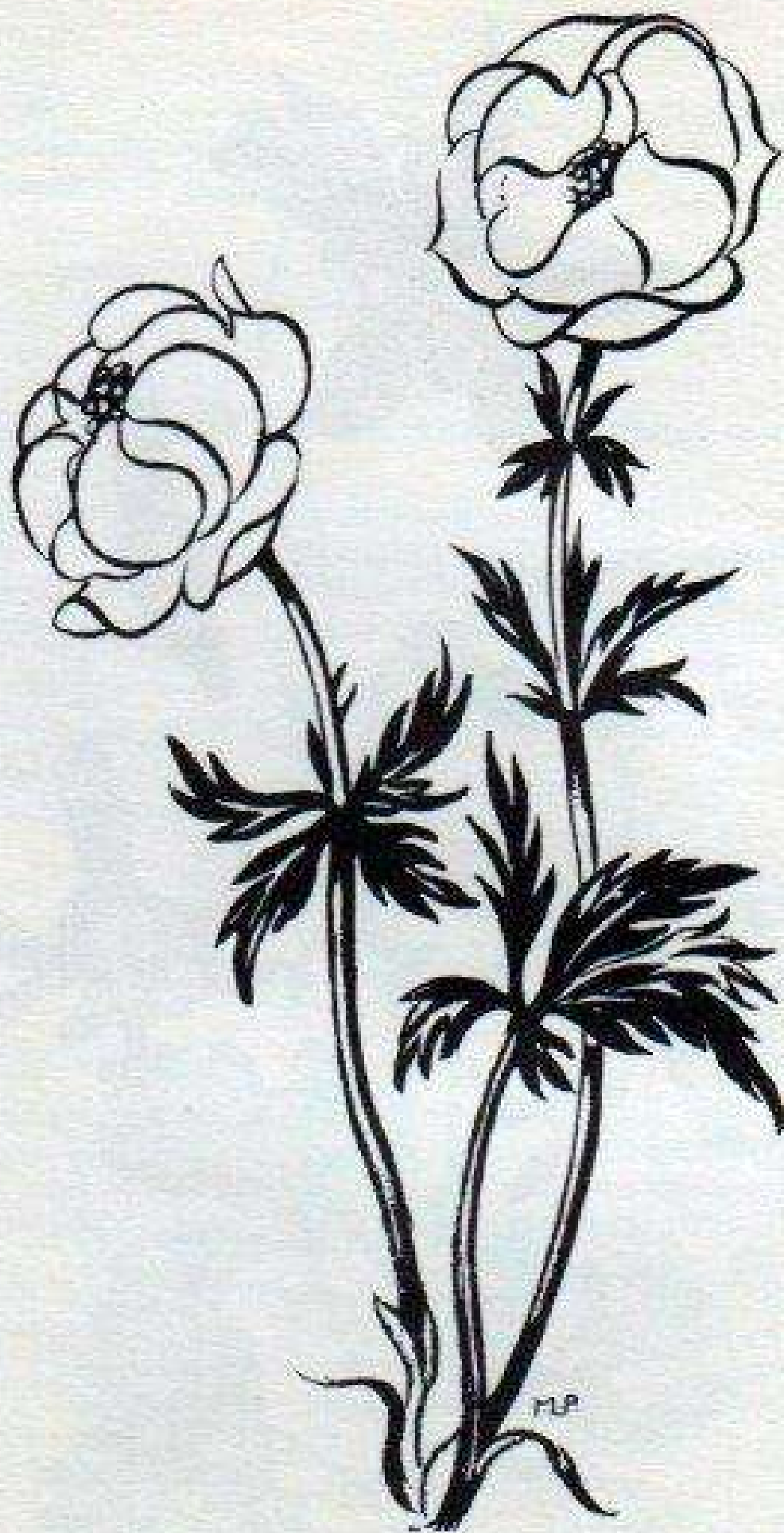
16 Mountain Avens · Silberwurz · *Dryas octopetala*

It is a tight-growing, creeping dwarf-shrub at home in many limestone mountains where it covers rocky slopes and scree as one of the earliest inhabitants. Its countless white star-like flowers which, like the stamens, resemble those of the Anemone, shine brightly against a setting of darkgreen foliage. The evergreen leaves are slightly curled at the roughened edges, and are silvery-white and downy beneath. It flowers from May to August and its range extends from the valleys to heights of about 8,000 feet.

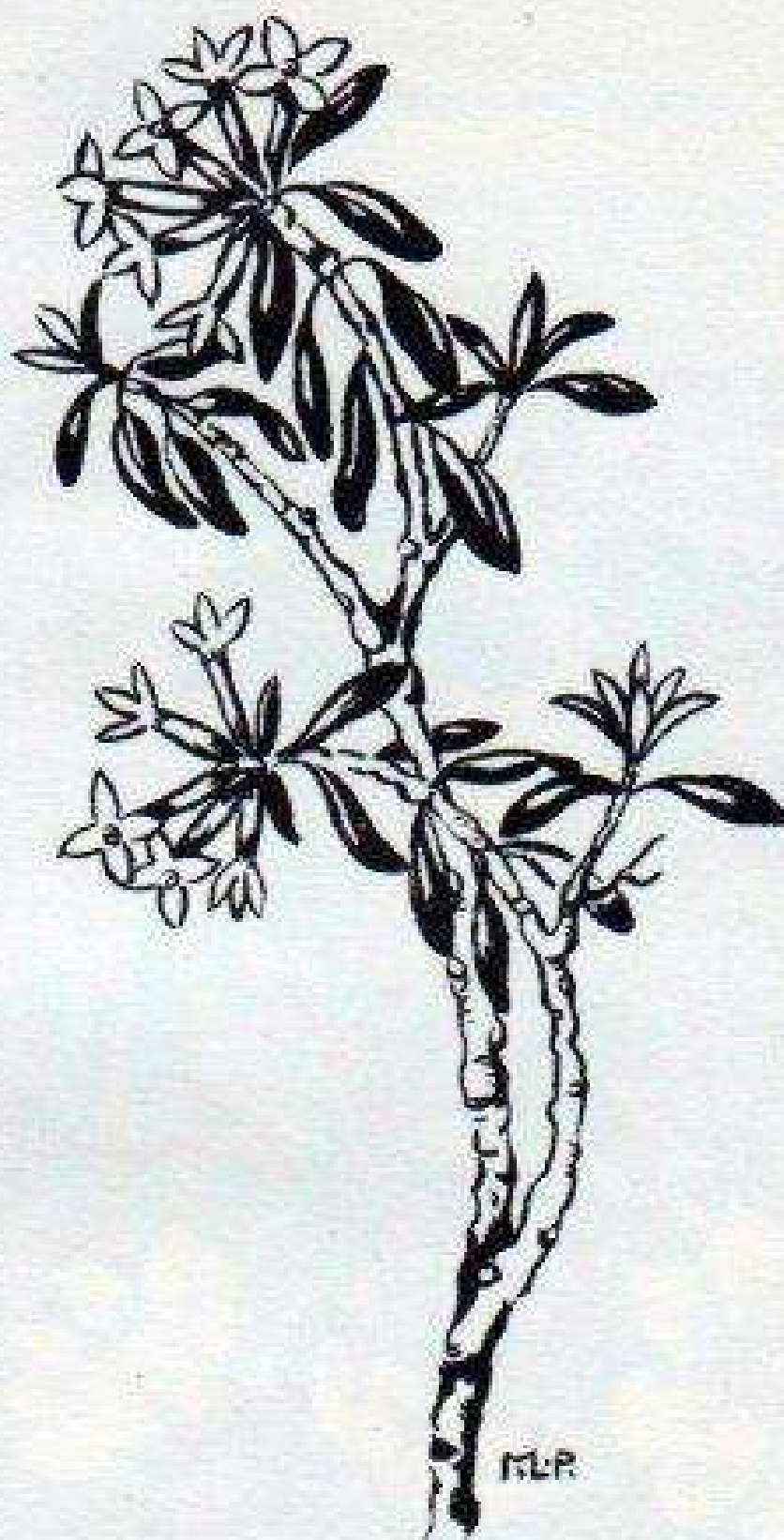
Protected in some Swiss Cantons.



Dunkle Akelei · Dark Columbine



17 Trollblume · (*Trollius europaeus*) · Globe-Flower



18 Steinröschen · (*Daphne striata*) · Spurge-Olive



Silberwurz
Mountain Avens

Stengelloser Enzian
Stemless Gentian

Mehlprimel
Mealy Primrose

19 Stemless Gentian · Stengelloser Enzian · *Gentiana clusii* · Height : 1½—4-in.

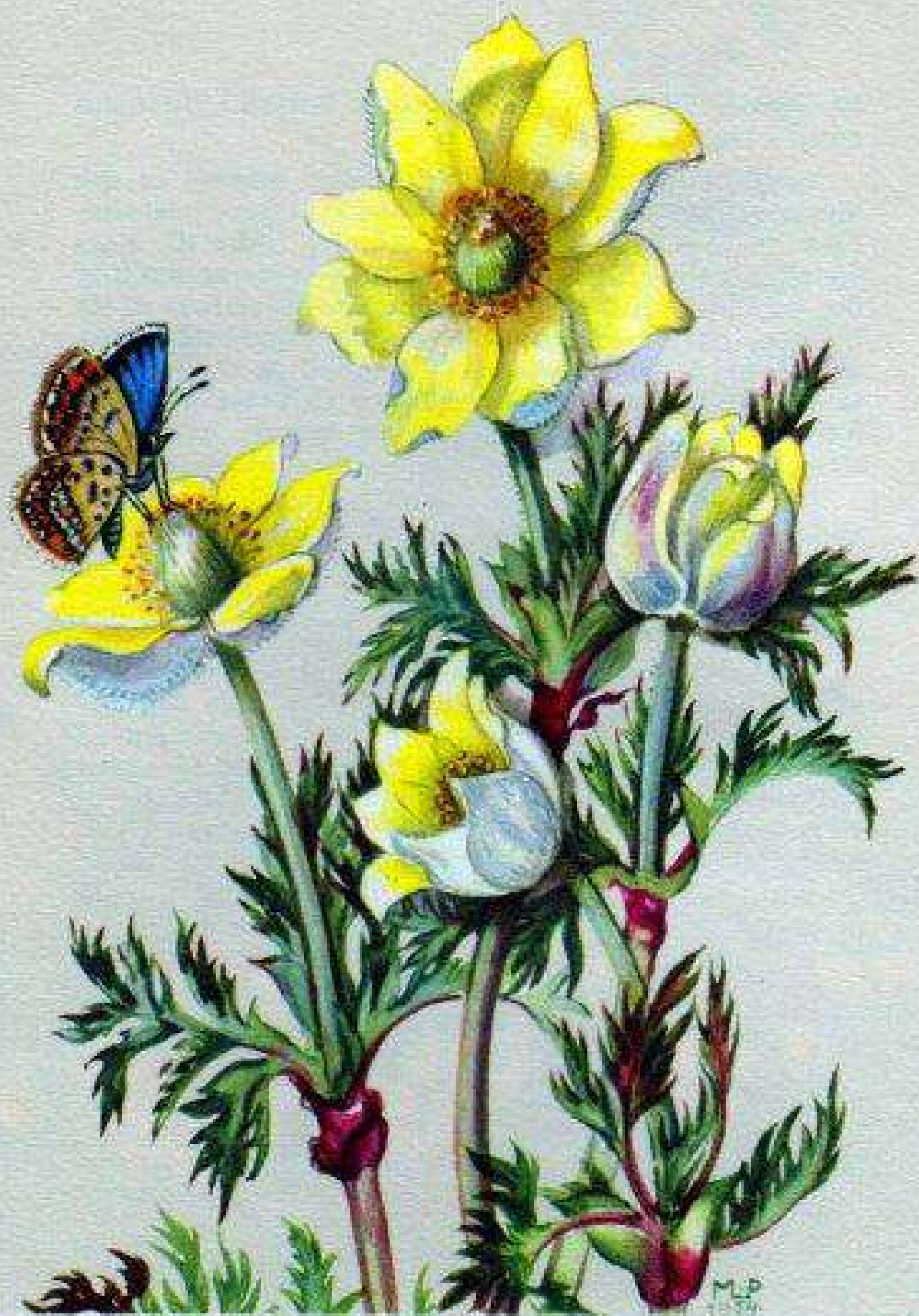
In Spring, we meet with the blue flowers of the Stemless Gentian on chalk-land and in Alpine pastures. Like its near relative on the primary rocks (*G. Korianz*), it is the epitome of all Alpine flowers, enchanting the beholder, year after year, by the splendour of its blooms. It prefers to grow among the Mountain Avenas and dwarf willows, and can be found in the valleys as well as in the mountains up to altitudes of about 9,400 feet. It flowers from May to August, and occasionally a second time, in the late Autumn.

Protected in Germany, only partially in Austria and Switzerland.

20 Mealy Primrose · Mehlprimel · *Primula farinosa* Height : 2—12-in.

The common Mealy Primrose grows freely in marshy meadows where it flowers from May to July. It can also be found, however, on stony tracts and in dry basic soils. It ranges up to altitudes of about 8,700 feet, and its name is a pointer to a peculiarity of stem, calyx and the undersides of the leaves, which appear to be coated all over with heavy white meal.

Protected in Germany and in the Swiss Canton of Waadt.



Schwefelgelbe Anemone · Yellow Anemone

21 Yellow Anemone · Schwefelgelbe Anemone · *Pulsatilla alpina sulphurea* · Height : 6—12-in.

In June, we often meet with the yellow Anemone at heights of about 4,200 to 10,000 feet. It prefers crystalline rocks, acidulous Alpine pastures and grassland. The undersides of the petals are delicately tinged with blue, forming a striking contrast to the sulphur-yellow patch within the flower.

Poisonous. Protected in Germany and in some Swiss Cantons, and in several Austrian provinces.



22 White Saxifrage-Aizoon · Traubensteinbrech · *Saxifraga aizoon* · Height : 4—16-in.

Out of basal rosettes of leaves, the Saxifrage-Aizoon sends up flower spikes with dainty little white petals. The evergreen rosettes of leaves are edged with mealy encrustations. It grows freely in the Alps out of rock crevices and on rock faces, and requires for adequate growth basic to moderately acid soils. Blossoming time lasts from May to August and the flower occurs even at altitudes of about 11,000 feet.

Like all other Alpine "Cushion" and rosette-plants, the numerous Saxifrage-varieties are in great need of protection. Partially protected in Germany and Austria.

23 Auricula · Felsen-Aurikel · *Primula auricula*
Height : 2—10-in.

On precipitous cliffs, in rock crevices and in the scree of the limestone Alps, the golden-yellow Auricula can be seen flowering from April to July. The flowers exhale a delicate scent and resemble the primrose in shape, though the leaves are more fleshy. →



Traubensteinbrech
White Saxifraga-Aizoon

Felsen-Aurikel
Auricula

smooth and grey-green in colour. Its range, as a rule, is from 3,300 to 8,000 feet.

Protected in Germany, Austria and Switzerland.

— * —

24 Rusty-leaved Alpine Rose · Rostblättrige Alpenrose · *Rhododendron ferrugineum* · Height : more than 3 feet.

The Rusty-leaved *Rhododendron* dislikes calcareous soils, since it requires for adequate growth, acid humus sites. Belonging to the belt of Alpine dwarf-shrub vegetation, this lowly shrub, together with the bog whortleberry and great bilberry, clothes hillsides and moderately acidulous slopes. It has shiny green leaves covered with rusty scales beneath, and is often called the "true" Alpine Rose in opposition to the hairy variety growing in the limestone Alps. It flowers from June to July, and its range is well up to 9,000 feet.

Poisonous. Fully protected in Switzerland, and Bavaria ; only partially in Austria. Its sale is strictly prohibited in all the other parts of Germany.

25 Hairy Alpine Rose · Bewimperte Alpenrose · *Rhododendron hirsutum* · A lowly shrub.

Smaller in size than the former, its clusters of flowers are more loosely set and somewhat brighter in colour. The leaves, which are hairy at the edges, look brighter too. Unlike the Rusty *Rhododendron*, it thrives in chalk and dolomite soils where it spreads over scrub-covered slopes, already overgrown by *Erica*.

It flowers from June to July, producing bright red blooms which are a wonderful sight. It ranges up to 8,600 feet.

Poisonous. Fully protected in Bavaria ; only partially in Austria (but not in all provinces), and in Switzerland. Its sale is strictly prohibited in all the other parts of Germany.





Rostblättrige Alpenrose
Rusty-leaved Alpine Rose

Bewimperte Alpenrose
Hairy Alpine Rose



Edelraute
Wormwood

Bärtige Glockenblume
Bearded Campanula

Goldfingerkraut
Golden Potentilla

- ← 26 **Wormwood** · Edelraute · *Artemisia laxa* · Height : 4—12-in.

This highly aromatic flower can be found even at altitudes of 12,000 feet. Its delicate leaves and stems are silvery-grey, and the latter carry small yellow basket-shaped flower-heads. It blooms from July to September on cliffs and in acidulous soils, especially in the glacier-moraines of the Central-Alps.

Protected in Germany, Austria and in some Swiss Cantons.

- 27 **Bearded Campanula** · Bärtige Glockenblume · *Campanula barbata* · Height : 4—16-in.

In Summer, this Campanula can be seen everywhere in the Alps, growing in rich humus soils deficient in chalk. It takes its name from the hairiness of the corolla. The flowers, borne in clusters, vary in colour from delicate blue-violet to pure white. In a dwarfed form, it even grows at heights of about 9,600 feet, and flowers from June to August.

- 28 **Golden Potentilla** · Goldfingerkraut · *Potentilla aurea* · Height : 2—14-in.

The Golden Potentilla seems to be at home among Rhododendron shrubs and on turf in acid humus soils where it flowers from June to September. An orange-yellow patch appears at the base of the petals. Occasionally, this plant ranges up to the snowline.



- 29 **Snow-Gentian** · Schnee-Enzian · *Gentiana nivalis* Height : $\frac{1}{2}$ —6-in.

On sunny rock faces or on poor pasture land, we often meet with the tiny dark-blue star-like flowers of the annual Snow-Gentian. Its stems are erect and bear from one to several flowers. It grows at heights varying from 4,600 to 10,000 feet, and blooms from June to August.



Schnee-Enzian
Snow-Gentian

Spinnweben-Hauswurz
Cobwebbed Houseleek

← Its sale is strictly prohibited in Germany ; it is protected in the Swiss Canton of St. Gallen. Partially protected in Austria.

30 **Cobwebbed Houseleek** · Spinnweben-Hauswurz · *Sempervivum arachnoideum* · Height : 2—5-in.

This plant can usually be seen growing in dry rock crevices and on sun-exposed stony grassland. It delights in weakly basic to moderately acid soils and ranges, as a rule, up to 9,600 feet. Its green rosettes of leaves are covered at the top with an intricate system of cobweb-like threads.

It blooms from June to September.

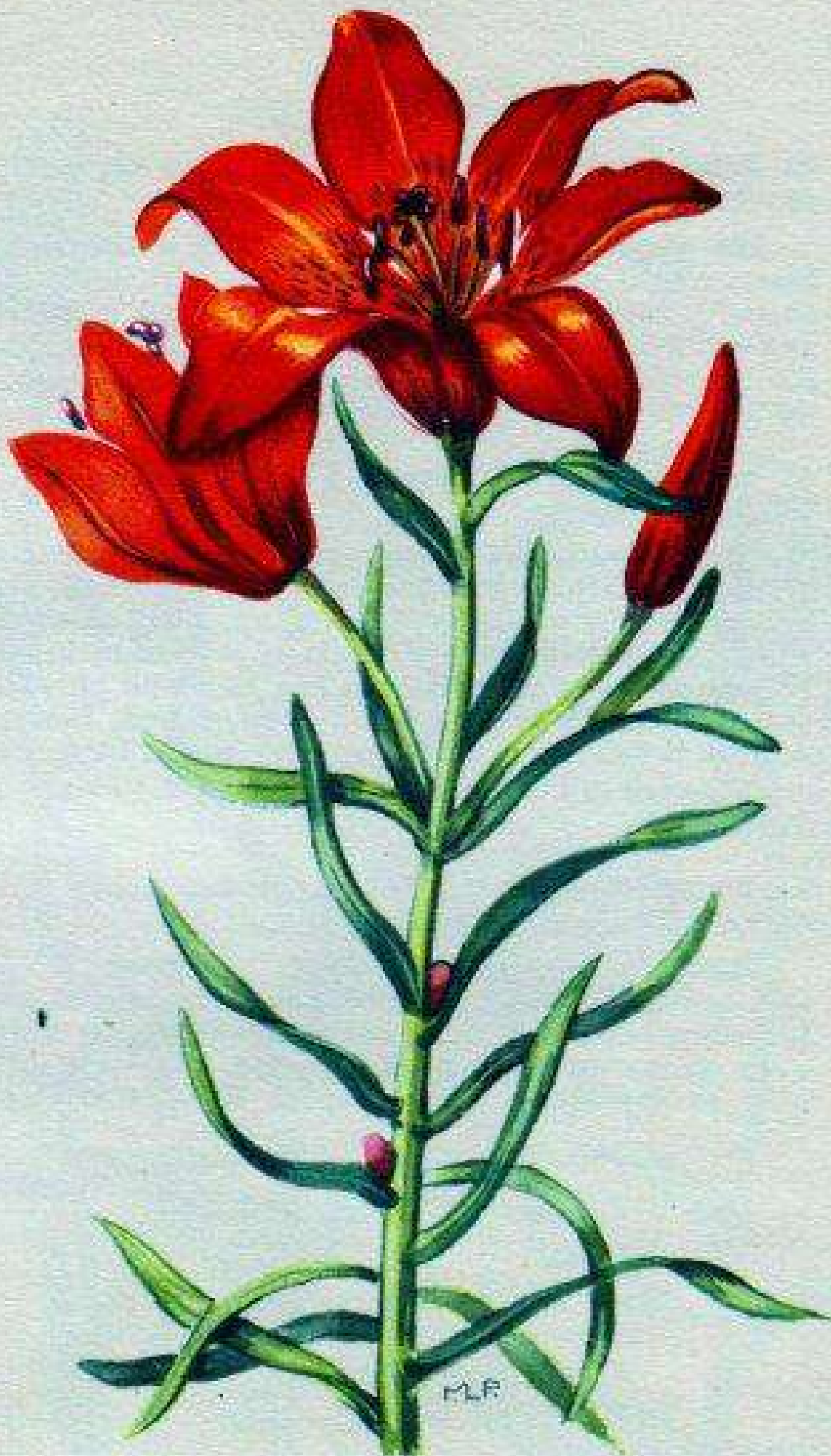
Partially protected in Germany.

———— * ————

31 **Orange Lily (bulbous)** · Feuerlilie · *Lilium bulbiferum* · Height : 8—40-in.

The Orange Lily can be found on sunny slopes, on the border of woods and in Alpine meadows. The narrow leaves appear alternately, and often bear small flower buds in the axils. It blooms from May to July, its colours varying from red to fiery red. It thrives in fertile basic to slightly acid soils and ranges up to 7,800 feet.

Protected in Germany, Austria and Switzerland.



Feuerlilie · Orange Lily

32 Betony-leaved Rampion · Ziestblättrige Rapunzel · *Phyteuma betonicifolium* · Height : 8—28-in.

The upper part of the stem carries a few short bracts and a violet-blue inflorescence, cylindrical in shape. It seems to flourish in poor pastures and turf, and can frequently be found in soils deficient in chalk. Flowering season : June to September, at any height up to 8,700 feet.

33 Martagon Lily · Türkenbund · *Lilium martagon*
Height : 12—24-in.

This interesting Lily-variety is at home in deciduous woods and Alpine meadows or among bushes. The petals which are dirty red in colour, bend upwards when fully formed, and are strikingly marked by bright brown-red spots. Sometimes, it can be found growing at levels as high as 8,700 feet. It flowers from June to August. It delights in fertile, slightly humus loam.

Protected in Germany, Austria and most Cantons of Switzerland.

34 Round-Headed Rampion · Kugel-Rapunzel · *Phyteuma orbiculare* · Height : 6—16-in.

This plant, popularly known as "Devil's-claw", is at home in mountain meadows, on rocky wastes and limestone rocks. It is quite common, and can be found even on the plains north of the Alps. It flowers from May to September ranging up to about 9,200 feet.



Ziesblättrige Rapunzel
Betony-leaved Rampion

Türkenbund
Marlagon Lily

Kugel-Rapunzel
Round-Headed Rampion



35 Breitblättriges Knabenkraut · (*Orchis latifolia*) · Broad-leaved Orchid



36 Rauher Enzian · (*Gentiana aspera*) · Rough Gentian



Herzblättrige Kugelblume
Globe-Daisy (Heart-leaved)

Orangerotes Habichtskraut
Orange Hawkweed

37 Globe-Daisy (Heart-leaved) · Herzblättrige Kugelblume · *Globularia cordifolia* · Height : 1½—4-in.

This creeping mat-forming undershrub which is propagated by root-growing runners, covers the screes of the limestone mountains. The lavender-blue globular flower-heads are of striking appearance. Flowering from May to August, the Globe-Daisy can be found even at altitudes of about 9,000 feet.

38 Orange Hawkweed · Orangerotes Habichtskraut · *Hieracium aurantiacum* · Height : 8—12-in.

On poor turf, dwarf shrub-covered heaths, in meadows, we meet with the Orange Hawkweed. It prefers acid, clayey humus soils, and has a certain resemblance to the Golden Hawk's-Beard, but its stems are taller and carry many small brightly coloured flower-heads. It blooms from June to August at any height up to 8,700 feet.



Stellthauziger Löwenzahn
Lion's Tooth

Zierliche Glockenblume
Shell-leaved Bell-Flower

Große Sternadolde
Large Astrantia

Gemeines Habichtskraut
Mouse-ear (Hawkweed)

39 Stiff-haired Dandelion (Lion's-Tooth) · Steifhaariger Löwenzahn · *Leontodon hispidus* · Height: 6—12-in.

This hairy Dandelion, together with many varieties, can be found freely growing on rocky wastes, in meadows, pastures and river deposits. It flowers from May to October in valleys, and mountains up to 9,000 feet.

40 Shell-leaved Bell-Flower · Zierliche Glockenblume · *Campanula cochlearifolia* · Height: 2—8-in.

This charming little Bell-Flower grows in stony meadows, in chalk scree and on rock faces where it forms tight little cushions spangled with countless small blue flowers. Its fragility, combined with the profusion of flowers, makes it one of the most attractive Alpine plants. It blooms from June to September, and ranges from the valleys to heights of about 10,000 feet.

41 Large Astrantia · Große Sterndolde · *Astrantia major* · Height: 8—20-in.

In bush-covered meadows and open deciduous and pine woods, we often meet with the Large Astrantia. It thrives in chalky soil, and can also be found in the Lower-Alps. Due to the star-like grouping of coloured bracts round insignificant little umbels, its inflorescence, like that of the Edelweiss, forms a deceptive flower-head. It blooms from July to August at any height up to about 6,600 feet. In the past, it was held in high regard as an officinal plant.

Protected in the Swiss Canton of Appenzell.

42 Mouse-ear (Hawkweed) · Gemeines Habichtskraut · *Hieracium pilosella* · Height: 4—14-in.

The species *Hieracium* consists of many, mostly yellow-flowered varieties which are frequently found in poor meadows and open woods. It flowers from July to August, and is quite common in the valleys and in the mountains.



Alpen-Waldrebe • Alpine Clematis

43 **Alpine Clematis** · Alpen-Waldrebe · *Clematis alpina*

This, the only climbing plant of our Alpine flora, blooms from May to July among bushes and woods where it overgrows trees and rocks. Its four-petalled flowers vary in colour from bright lavender-blue to dark-violet. It prefers basic to moderately acid soils, and its range is from 3,300 to 7,200 feet.

Protected in Switzerland.



44 **Edelweiss** · Edelweiß · *Leontopodium alpinum*

Height : 2—4-in.

On almost inaccessible cliffs, on sunny slopes and among limestone rubble, we still meet occasionally with the much sought-after Edelweiss. The white star, so often wrongly taken for the real flower, consists, in fact, of bracts surrounding small yellow flower-heads. It blooms from July to August at altitudes varying from 5,600 to 11,000 feet.

Protected in Germany, Austria and Switzerland.

45 **Alpine Aster** · Alpen-Aster · *Aster alpinus* ·

Height : 2—8-in.

The Alpine Aster can often be seen together with the Edelweiss, though more frequently, on dry sunny slopes where it thrives in calcareous soils. This type has large golden-centred flowers of lilac-purple. Flowering Time : July to August. Its range is from 4,600 to 10,200 feet.

Protected in some Swiss Cantons.





Edelweiss
Edelweiss

Alpen-Aster
Alpine Aster



Bündner Alpenmohn
Rhaetic Poppy

Weißer Alpenmohn
White Alpine Poppy

- ← 46 **Rhaetic Poppy** · Bündner Alpenmohn · *Papaver alpinum ssp. raeticum* · Height : 2—6-in.

In July and August, we often meet with the yellow Poppy on limestone and dolomite rocks or in the rocky wastes of the higher Central and Southern Alps. The stems are tough and thickly covered with stiff hairs. The sepals have a similar protective cover of dark hair, and fall as the flower expands. It ranges up to 10,000 feet.

- 47 **White Alpine Poppy** · Weißer Alpenmohn · *Papaver alpinum ssp. Sendtneri* · Height : 2—8-in.

The Alpine Poppy blooms from June to August in the bare chalk scree of the Northern Alps, covering them, at Flowering Time, with a splash of bright colour. Its leaves are not so thickly covered with hairs as in the case of its yellow relation. Its range is well up to 8,300 feet.

Protected in Switzerland.

———— * ————

- 48 **Arnica** · Berg-Arnika · *Arnica montana* · Height : 8—24-in.

The Arnica is a well known medicinal herb. Flowering from June to August, its large golden star-like blooms shine brightly in mountain meadows, pastures, and lime-free humus soils. In contrast to other Compositae-plants of somewhat similar appearance, its leaves and flower-heads are arranged in opposite pairs, and the stems are densely covered with sticky hairs. It ranges from the foot of the mountains up to a height of about 9,200 feet.

Partially protected in Austria and Switzerland. Its sale is strictly prohibited in Germany.

- 49 **Pannonian Gentian** · Pannonischer Enzian · *Gentiana pannonica* · Height : 6—24-in.

The Pannonian Gentian which thrives in calcareous soils may be seen growing in meadows, grassland and



Berg-Arnika
Arnica

Pannonischer Enzian
Pannonian Gentian

on rock-covered slopes of the Eastern Alps. Its stems rise to a height of two feet. It flowers from mid-July to September and its range is well up to 7,000 feet.

Protected in Bavaria, only partially in Austria. Its sale is strictly prohibited in all the other parts of Germany.



50 Swallowwort Gentian · Schwalbenwurz-Enzian ·
Gentiana asclepiadea · Height : 6—24-in.

Flowering from August to October in woods and damp meadows, and rising to a height of two feet, the Swallowwort Gentian thrives in calcareous clayey soils. Each stem bears many azure-blue bell-flowers in groups of two or three, in the leaf axils. From the mountain valleys, it ranges up to heights of 7,000 feet.

Protected in the Swiss Canton of Tessin. Its sale is strictly prohibited in Germany.



51 Dwarf Thistle · Silberdistel (Große Eberwurz) ·
Carlina acaulis

On sunny poor grassland, growing close to the ground, we often meet with the Dwarf Thistle. Its shiny silvery calyx-leaves close in dull weather, and at night ; hence its popular name : " Weather-Thistle ". It flowers from July to September up to altitudes of 9,200 feet.

Protected in the Swiss Cantons of Aargau and Basel, but only partially in Austria. Its sale is strictly prohibited in Germany.





Schwalbenwurz-Enzian • Swallowwort Gentian

52 **Dwarf Orchid** · Brandblütiges Knabenkraut · *Orchis ustulata* · Height : 4—12-in.

It grows in damp meadows where it blossoms from June to July. The tips of the petals look as if they had been scorched. It can be found up to altitudes of 6,600 feet.

Protected in some Swiss Cantons, and in Bavaria. Its sale is strictly prohibited in all the other parts of Germany.

53 **Nigritella** · Schwarzes Kohlröschen · *Nigritella nigra*

Growing in sunny pastures and meadows, the Nigritella belongs to the orchis-family. Even from a distance, it attracts notice with its strong odour of vanilla. It thrives in basic and acid soils, and flowers from June to August at any height up to about 9,000 feet.

Protected in Germany, Austria and Switzerland.



Fully protected plants must not be gathered or dug up.

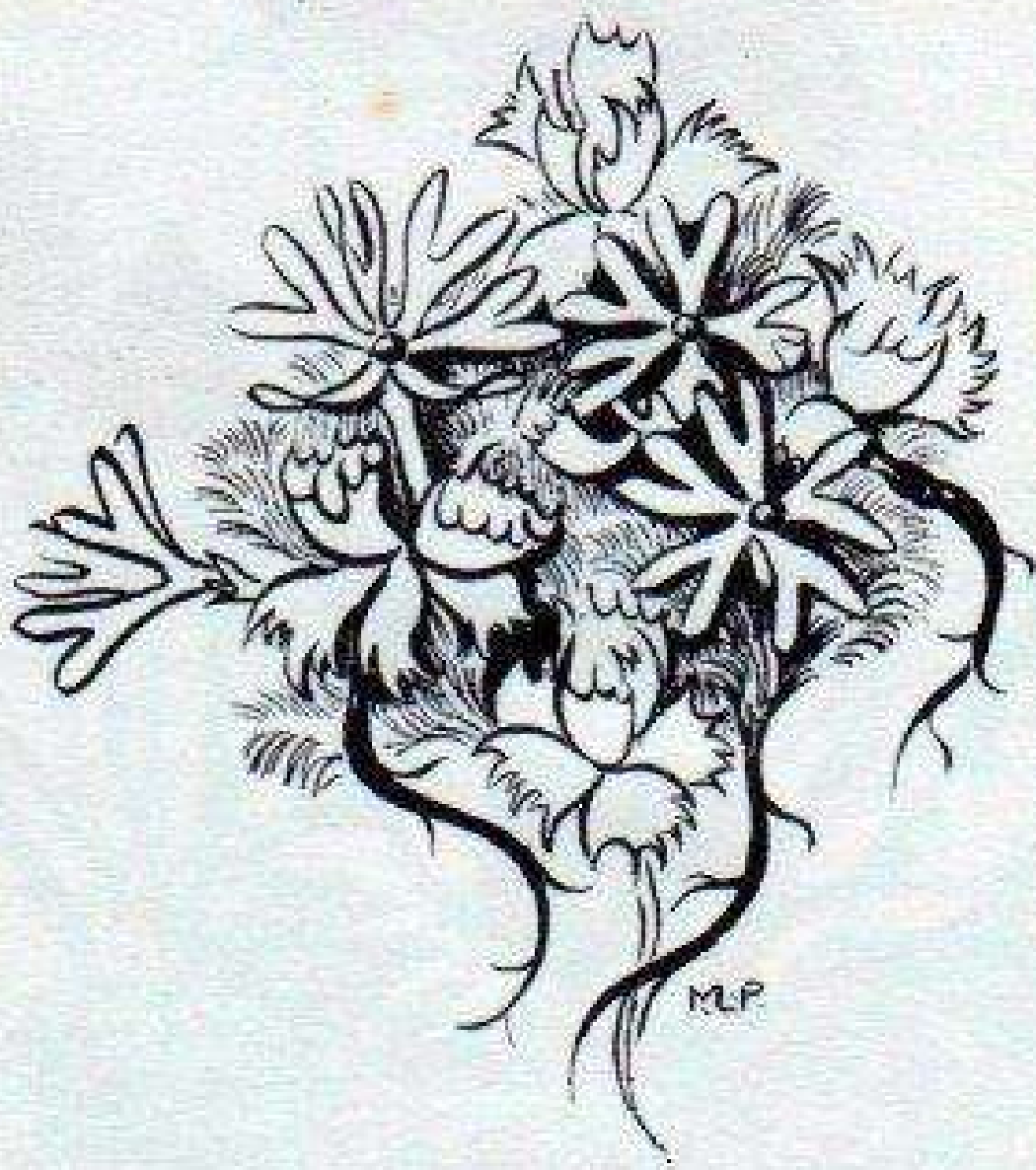
Partially protected plants : it is strictly forbidden to damage or to dig up the underground parts (roots or bulbs) or the rosettes of leaves of such plants.



Silberdistel
Dwarf Thistle

Brandblütiges Knabenkraut
Dwarf Orchid

Schwarzes Kohlröschen
Nigritella



54 Zwerg-Primel · (*Primula minima*) · Dwarf Primrose

